



# TRIM COIL



COLOR SELECTOR



What the Best Homes are Wearing®

# TRIMCOIL

**300 colors let you match virtually any job.**

Available in two-coat acrylic, PVC and DuraPro™ finishes, Trim Coil by NAPCO® by Ply Gem is manufactured in over 300 colors to provide designers with the flexibility to trim out virtually any Soffit, Fascia, Siding or Rainware job in the desired color.



**Scrapes and scratches won't mar its beauty.**

NAPCO® by Ply Gem uses exclusive two-coat acrylic paint that does more than protect the color of your trim coil. Two factory-applied coatings create an ultra-thick surface that repels air pollutants while guarding against sun and water damage. It's so tough, it actually resists scrapes and scratches.

**As beautiful to work with as it is to see.**

In spite of its extra layer of protection, Trim Coil by NAPCO® by Ply Gem is remarkably easy to work with. It cuts clean, bends sharp and lays flat. When you select Trim Coil, you can be sure of straight edges, length and width that will remain consistent box after box. Trim Coil meets the highest specifications for temper and gauge, and is assured to be free from ripples, waves and oil canning.

### TRIM COIL

- DuraPro™ finish with BASF PolyCeram® 580 coating provides superior mar resistance\*
- Premium two-coat acrylic smooth finish
- PVC coated striated finish
- Over 300 colors with excellent color retention
- Scratch, scrape and mar-resistant



NAPCO® two-coat acrylic finish

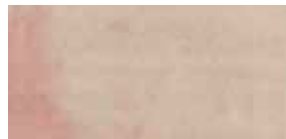


Their one-coat polyester paint

**Two-coat acrylic finish gives Trim Coil by NAPCO® by Ply Gem an ultra-thick surface that resists scrapes and scratches.**



NAPCO® two-coat acrylic finish



Their one-coat polyester paint

**Two-coat acrylic finish has excellent color retention and ensures a consistent look for years to come.**

\*PolyCeram® 580 is a registered trademark of BASF Corporation

## PHYSICAL CHARACTERISTICS AND MANUFACTURING DATA

	Acrylic Finish	PVC Finish	DuraPro™
<b>COATING</b>	Premium Painted Finish	Premium Striated Finish	Textured Satin Finish
<b>GLOSS</b>	10-14 @ 60°, ASTM D 523-80	22-27 @ 60°, ASTM D 523-80	20-40 @ 60°, ASTM D 523-80
<b>FLEXIBILITY</b>	No removal of finish with 600 Scotch Tape on a 2T bend, NCCA 11-19	No removal of finish with 600 Scotch Tape on a 0T bend, NCCA 11-19	No removal of finish with 600 Scotch Tape on a 2T bend, NCCA 11-19
<b>PENCIL HARDNESS</b>	HB-H Eagle Turquoise, NCCA 11-12	2B Eagle Turquoise, NCCA 11-12	HB-H Eagle Turquoise, NCCA 11-12
<b>ADHESION</b>	Excellent, ASTM D 3359-83	Excellent, ASTM D 3359-83	Excellent, ASTM D 3359-83
<b>IMPACT</b>	No visual cracking or finish release when subjected to impact in inch pounds equal to one and one half times the metal thickness, NCCA 11-6	No visual cracking or finish release when subjected to impact in inch pounds equal to one and one half times the metal thickness, NCCA 11-6	No visual cracking or finish release when subjected to impact in inch pounds equal to one and one half times the metal thickness, NCCA 11-6
<b>HUMIDITY RESISTANCE</b>	No loss of gloss, cracking or peeling after 1,000 hours @ 100% relative humidity, ASTM D 2247-86A	No loss of gloss, cracking or peeling after 1,000 hours @ 100% relative humidity, ASTM D 2247-86A	No loss after gloss, cracking or peeling after 1,000 hours @ 100% relative humidity, ASTM D 2247-86A
<b>SALT SPRAY RESISTANCE</b>	No under-cutting of film from edges in excess of 1/16" or face blistering after 3,000 hours at 5% neutral salt spray, ASTM B 117-85	No under-cutting of film from edges in excess of 1/16" or face blistering after 1,000 hours at 5% neutral salt spray, ASTM B 117-85	No under-cutting of film from edges in excess of 1/16" or face blistering after 3,000 hours at 5% neutral salt spray, ASTM B 117-86
<b>EXTERIOR EXPOSURE</b>	a. Fade: Max. #5 after 10 years at 45° south Florida exposure after removal of external deposits, ASTM D 2244-85 b. Chalk: Max #8 rating on all colors with the exception of white within 10 years at 45° south Florida, ASTM D 659-86	a. Fade: Max. #5 after 10 years at 45° south Florida exposure after removal of external deposits, ASTM D 2244-85 b. Chalk: Max #8 rating on all colors with the exception of white within 10 years at 45° south Florida, ASTM D 659-86	a. Fade: Max. #5 after 10 years at 45° south Florida exposure after removal of external deposits, ASTM D 2247-86A b. Chalk: Max. #8 rating on all colors with the exception of white within 10 years at 45° south Florida, ASTM D 659-86
<b>DRY FILM THICKNESS</b>	.75-.90 mils	3.3-3.7 mils	.70-.80 mils
<b>SOLVENT RESISTANCE</b>	100+ MEK rubs Meets the performance requirements of AAMA 1402-86	MEK rubs none Meets the performance requirements of AAMA 1402-86	100+ MEK rubs Meets the performance requirements of AAMA 1402-86



**Quality, like success, can be beautiful.**

For over 45 years, NAPCO® by Ply Gem has manufactured high-quality aluminum and vinyl exterior design products. In fact, NAPCO® products are subject to the toughest scrutiny: our own. We test the quality and performance of every product to assure that it will look great and protect every home. All so you can feel confident about your decision to offer NAPCO® by Ply Gem products.

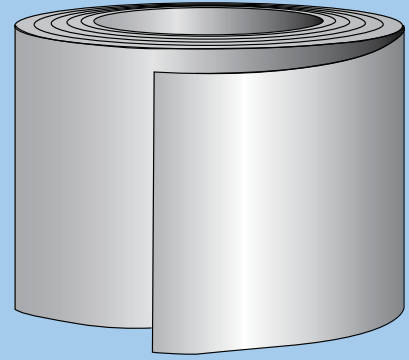


**NAPCO® TRIM COIL HAS BEEN GREEN APPROVED BY THE NAHB RESEARCH CENTER.**

This means you can be assured that NAPCO Trim Coil complies with specific green practice criteria in the National Green Building Standard. Visit [www.GreenApprovedProducts.com](http://www.GreenApprovedProducts.com) for more details.



# TRIM COIL



## Essential Accents

Enhance your home with exterior products from NAPCO® by Ply Gem.

## Last look: It's all in the details.

NAPCO® by Ply Gem offers a full line of attractive, durable, maintenance-free vinyl and metal exterior design products to complete the look of your home. From our weather-resistant Aluminum collection to our authentic Cedar Select® Shingle or Round Cut siding, we have everything you need. And that's not all. Our coordinated enhancements including Monticello Columns®, Richwood® Exterior Finishings, Ply Gem stone veneer, Gutter Warrior™ hanging system and Leaf Relief® gutter protection — all by Ply Gem — provide the perfect finish with minimum maintenance. More looks. Less work. That's Ply Gem.



Cedar Select® Round Cut Siding



Aluminum Trim Coil



Cedar Select® Shingle Siding



Elbows, Downspouts and Gutter



Ply Gem Stone



Woodgrain Embossed Fascia



Columns



Shutters, Vents, Mounting Blocks



Gutter Protection



2600 Grand Blvd., Suite 900  
Kansas City, MO 64108  
Phone: 800-78-NAPCO  
Fax: 888-842-3991  
[www.napcoproducts.com](http://www.napcoproducts.com)



Due to printing limitations, product colors may not be exactly as shown. Contact your distributor for actual product samples. © Leaf Relief and Richwood are trademarks of Alcoa Home Exterior, Inc. Monticello, Columns, Rigituck, XactFit, NAPCO, the NAPCO logo, and the "What the Best Homes are Wearing" slogan are trademarks of NAPCO, Inc. Ply Gem is a trademark of Ply Gem Industries, Inc. and/or its subsidiaries. ©NAPCO, Inc. 2012. 2201070161102/BT/CG/1011

# NAPCO®

<b>Antique Ivory</b> 36629224-A	<b>Aspen</b> 36628366-P** 36629374-A**	<b>Black/ Musket Brown</b> 36627278-A	<b>Black/ Window White</b> 36627271-A	<b>Blue Bayou</b> 36628145-P** 36627145-A**	<b>Blue Ridge</b> 36628364-P** 36629369-A**	<b>Brandy</b> 36629378-A <b>Evening Shadow</b>	<b>Bronze/ Window White</b> 36627277-A
<b>Cactus</b> 36628330-P 36627267-A	<b>Cape Blue</b> 36628333-P 36629407-A	<b>Carey Tan</b> 36629225-A	<b>Cocoa Bean</b> 36629223-A	<b>Cream</b> 36628336-P 36627266-A	<b>Evening Gray</b> 36629379-A	<b>Evening Shadow</b> 36628144-P** 36627144-A	<b>Flagstone</b> 36628365-P** 36629370-A**
<b>Forest</b> 36629377-A	<b>Graystone</b> 36628331-P 36627246-A	<b>Grecian Green</b> 36628337-P* 36627262-A*	<b>Harbour</b> 36628341-P*	<b>Heather</b> 36628334-P 36627265-A	<b>Herringbone Mist</b> 36636751-P 36645863-A	<b>Imperial Brown</b> 36629226-A	<b>Island Palm</b> 36629249-P** 36628249-A**
<b>Ivory</b> 36628332-P 36627263-A	<b>Khaki</b> 36628447-P 36629407-A	<b>Linen</b> 36628313-P 36627113-A	<b>Mocha</b> 36628185-P 36629170-A	<b>Musket Brown</b> 36629373-P 36627260-A	<b>Olive</b> 36628511-P 36629511-P	<b>Pearl Gray</b> 36629227-A	<b>Plantation Teak</b> 36628143-P** 36627143-A**
<b>Prairie</b> 36628363-P** 36629368-A**	<b>Royal Brown</b> 36628326-P 36627259-A	<b>Sandalwood</b> 36627269-A	<b>Sedona Red</b> 36628360-P** 36627391-A**	<b>Slate</b> 36644810-P 36644840-A	<b>Stone Clay</b> 36635441-P 36635304-A	<b>Terratone</b> 36627251-A	<b>Tuxedo Gray</b> 36629228-A
<b>White</b> 36628321-P 36627243-A 36627264-D	<b>Wicker</b> 36635435-P 36645856-A	<b>Wine</b> 36628342-P*	<b>Window Almond</b> 36642602-P	<b>Window Almond/ Window White</b> 36627276-A	<b>Window Brown</b> 36628811-P	<b>Window Brown/ Window White</b> 36627275-A	<b>Window White</b> 36641501-P 36627274-A
<b>Shaded Cedar (Prairie)</b> 36629368-A**	<b>Shaded Gray (Slate)</b> 3664840-A						

# CERTAINTED®

<b>Arbor Blend</b> 36627292-A	<b>Arctic Blend</b> 36627293-A	<b>Autumn Yellow</b> 36628302-P 36629301-A	<b>Barn Red</b> 36648154-P* 36629201-A	<b>Buckskin</b> 36629232-P 36628204-A	<b>Canyon Blend</b> 36627294-A	<b>Colonial White</b> 36628321-P 36627243-A	<b>Cypress</b> 36647112-P 36629222-A
<b>Desert Tan</b> 36641502-P 36641532-A	<b>Driftwood Blend/ Granite Gray</b> 36628115-P* 36629202-A	<b>Flagstone</b> 36628284-P 36627295-A	<b>Frontier Blend/ Mountain Cedar</b> 36627296-A	<b>Heritage Cream</b> 36628357-P 36629787-A	<b>Herringbone</b> 36636751-P 36645863-A	<b>Ivy Green</b> 36647102-P* 36629203-A	<b>Light Maple</b> 36648160-P 36648140-A
<b>Meadow Blend</b> 36627297-A	<b>Natural Clay/ Timber Blend</b> 36635441-P 36635304-A	<b>Oxford Blue</b> 36647105-P 36645854-A	<b>Pacific Blue</b> 36647106-P* 36629205-A	<b>Pale Ivory</b> 36647109-P 36645851-A	<b>Rustic Blend</b> 36629368-A	<b>Sable Brown</b> 36647111-P* 36629206-A	<b>Sandpiper</b> 36627290-A
<b>Sandstone Beige</b> 36648152-P 36648132-A	<b>Savannah Wicker</b> 36635435-P 36645856-A	<b>Silver Ash</b> 36648151-P 36648131-A	<b>Snow</b> 36647103-P 36627243-A	<b>Sterling Gray/ Glacier Blend</b> 36647107-P 36645852-A	<b>Suede</b> 36627289-A	<b>Summer Wheat</b> 36628114-P 36629207-A	<b>Warm Sand</b> 36647108-P 36645858-A
<b>Weathered Blend</b> 36627298-A	<b>Woodland Mist</b> 36628119-P 36629208-A						

# CRANE® / VIPCO®

<b>Bone</b> 36636751-P 36645863-A	<b>Cabin Brown</b> 36629306-P* 36628309-A	<b>Clay</b> 36642607-P 36642637-A	<b>Country Beige</b> 36642602-P 36642632-A	<b>Cypress</b> 36642281-P 36629272-A	<b>Driftwood</b> 36642604-P 36642634-A	<b>Evergreen</b> 36629307-P 36628312-A	<b>Greystone</b> 36642603-P 36642633-A
<b>Harbor Blue</b> 36642611-P 36642641-A	<b>Ivory</b> 36642605-P 36642635-A	<b>Lighthouse Red</b> 36629303-P** 36628311-A**	<b>Mocha</b> 36628185-P 36629170-A	<b>Pearl</b> 36642601-P 36642631-A	<b>Regatta Blue</b> 36629308-P* 36628310-A	<b>Rye</b> 36642615-P 36629220-A	<b>Saddle</b> 36629389-P 36628389-A
<b>Wheat</b> 36642282-P 36629279-A	<b>White</b> 36628321-P 36627243-A						

# GEORGIA-PACIFIC®

<b>Almond</b> 36628332-P 36627263-A	<b>Beige</b> 36628334-P 36627265-A	<b>Blue</b> 36635431-P 36635401-A	<b>Briarwood</b> 36629363-P** 36629368-A**	<b>Clay</b> 36635441-P 36635304-A	<b>Cobblestone</b> 36628367-P** 36629375-A**	<b>Cream</b> 36628336-P 36627266-A	<b>Flint</b> 36644810-P 36644840-A
<b>Gray</b> 36628331-P 36627246-A	<b>Hampton Red</b> 36628360-P** 36627391-A**	<b>Mist</b> 36636751-P 36645863-A	<b>Musket Brown</b> 36629373-P 36627260-A	<b>Pearl</b> 36635434-P 36635404-A	<b>Pewter</b> 36628365-P** 36627259-A**	<b>Royal Brown</b> 36628326-P 36627259-A	<b>Sagebrook</b> 36628366-P** 36629374-A**
<b>Tan</b> 36635435-P 36645856-A	<b>Wedgewood</b> 36628364-P** 36629369-A**	<b>White</b> 36628321-P 36627243-A	<b>Cherry</b> 36635222-A	<b>Chestnut</b> 36627275-A	<b>Ironwood</b> 36629370-A**	<b>Maple</b> 36627249-A	<b>Mesquite</b> 36629214-A
<b>Oak</b> 36629218-A	<b>Olive</b> 36628511-P 36629511-A	<b>Shaded Cedar</b> 36629368-A	<b>Shaded Gray</b> 36644840-A	<b>Sycamore</b> 36629370-A**	<b>Thistle</b> 36628330-P 36627267-A		

# HEARTLAND®

<b>Almond</b> 36628332-P 36627263-A	<b>Antique White</b> 36644801-P 36644831-A	<b>Birchwood</b> 36648152-P 36648132-A	<b>Camel</b> 36627279-A	<b>Clay</b> 36644807-P 36635304-A	<b>Cream</b> 36628357-P 36629787-A	<b>Gray</b> 36628331-P 36644833-A	<b>Linen</b> 36628196-P 36629165-A
<b>Mist</b> 36628190-P 36629789-A	<b>Pewter</b> 36644810-P 36644840-A	<b>Sage</b> 36647112-P 36629222-A	<b>Sand</b> 36629385-P 36628385-A	<b>Sandalwood</b> 36644806-P 36644836-A	<b>Sienna</b> 36628188-P 36629791-A	<b>White</b> 36628321-P 36627243-A	

# JAMES HARDIE® (coordinating colors)

<b>Alpine Frost</b> 36629388-P 36628388-A	<b>Arctic White</b> 36647103-P 36627243-A	<b>Autumn Tan</b> 36635435-P 36645856-A	<b>Boothbay Blue</b> 36628366-P** 36629374-A**	<b>Chestnut Brown</b> 36627284-A	<b>Cobble Stone</b> 36628185-P 36629170-A	<b>Country Lane Red</b> 36629378-A	<b>Evening Blue</b> 36647106-P 36629205-A
<b>Harris Cream</b> 36627290-A	<b>Heathered Moss</b> 36647112-P 36629222-A	<b>Iron Gray</b> 36629228-A	<b>Khaki Brown</b> 36629386-P 36628386-A	<b>Light Mist</b> 36628331-P 36627246-A	<b>Monteray Taupe</b> 36635441-P 36635304-A	<b>Navajo Beige</b> 36641532-A	<b>Parkside Pine</b> 36629201-A
<b>Sail Cloth</b> 36647109-P 36645851-A	<b>Sandstone Beige</b> 36642602-P 36627276-A	<b>Soft Green</b> 36628511-P 36629511-A	<b>Timber Bark</b> 36647111-P 36629206-A	<b>Traditional Red</b> 36648154-P 36629201-A	<b>Woodland Cream</b> 36628357-P 36644834-A	<b>Woodstock Brown</b> 36628363-P** 36629368-A**	

Note: James Hardie Colors are our best available match. Please use fandeck to verify customer acceptance.

# KP® / ABTCO®

<b>Almond</b> 36628178-P 36629175-A	<b>Blue Mist</b> 36641504-P 36641534-A	<b>Classic Linen</b> 36644801-P 36644831-A	<b>Clay</b> 36644807-P 36635304-A	<b>Heritage Gray</b> 36628777-P 36629737-A	<b>Khaki</b> 36628180-P 36629290-A	<b>Prairie Wheat</b> 36628357-P 36629787-A	<b>Sandstone</b> 36628199-P 36629211-A
<b>Slate</b> 36644810-P 36629176-A	<b>Tan</b> 36628191-P 36627269-A	<b>White</b> 36628321-P 36627243-A	<b>Wicker (Cobblestone)</b> 36635435-P 36627291-A				

# MASTIC HOME EXTERIORS®

<b>Almond</b> 36628332-P 36627263-A	<b>Black/ Musket Brown</b> 36627278-A	<b>Bronze</b> 36628391-A	<b>Cameo</b> 36635434-P 36635404-P	<b>Classic Cream</b> 36628336-P 36627266-A	<b>Desert Sand</b> 36629385-P 36628385-A	<b>Evergreen</b> 36629377-A	<b>Linen</b> 36629388-P 36628388-A
<b>Musket Brown</b> 36629373-P 36627260-A	<b>Pebblestone Clay</b> 36629386-P 36628386-A	<b>Sandtone</b> 36629389-P 36628389-A	<b>Terra Bronze</b> 36628390-A	<b>Victorian Gray</b> 36629387-P 36628387-A	<b>White</b> 36628321-P 36627243-A	<b>Wicker</b> 36635435-P 36645856-A	
<b>Beige</b> 36628357-P 36629787-A	<b>Blue Gray</b> 36628778-P 36629738-A	<b>Charcoal Gray</b> 36627293-A	<b>Chesapeake Green</b> 36627282-A	<b>Clay</b> 36644807-P 36635304-A	<b>Country Green</b> 36627285-A	<b>Cypress</b> 36647112-P 36629222-A	<b>Driftwood</b> 36636751-P 36645863-A
<b>Flagstone</b> 36828286-P 36627267-A	<b>Gray</b> 36628194-P 36629192-A	<b>Hampton Blue</b> 36627283-A	<b>Harvard Slate</b> 36628281-P 36627281-A	<b>Heather</b> 36628283-P 36627286-A	<b>Heritage Blue</b> 36627287-A	<b>Highland Cedar</b> 36627301-A	<b>Linen</b> 36628313-P 36627113-A
<b>Meadow Green</b> 36627302-A	<b>Mountain Blue</b> 36628285-P 36627303-A	<b>Natural Cedar</b> 36627284-A	<b>Pebble Clay</b> 36629386-P 36628386-A	<b>Rustic Red</b> 36627288-A	<b>Sage</b> 36628455-P 36627455-A	<b>Sand</b> 36629385-P 36628385-A	<b>Soft Maple</b> 36648160-P 36648140-A
<b>Sterling</b> 36628331-P 36629286-A	<b>Victorian Gray</b> 36628387-A	<b>Vintage Cream</b> 36628357-P 36629787-A	<b>White</b> 36628321-P 36627243-A	<b>Wicker</b> 36635435-P 36645856-A			

# VARIFORM®

<b>Autumn Beige</b> 36628334-P 36627265-A	<b>Bayou</b> 36628145-P** 36627145-A**	<b>Canyon</b> 36628363-P** 36629368-A**	<b>Classic Cream</b> 36628336-P 36627266-A	<b>Delray Sand</b> 36628357-P 36629787-A	<b>Dover White</b> 36628321-P 36627243-A	<b>Georgian Gray</b> 36628331-P 36627246-A	<b>Granite</b> 36628365-P** 36629370-A**
<b>Graphite Gray</b> 36644810-P 36644840-A	<b>Irish Thistle</b> 36628330-P 36627267-A	<b>Island Pearl</b> 36635434-P 36635404-A	<b>Mediterranean Palm</b> 36628138-P** 36627138-A**	<b>Musket Brown</b> 36629373-P 36627260-A	<b>Natural Almond</b> 36628332-P 36627263-A	<b>River Bend</b> 36628364-P** 36629369-A**	<b>Sandtone</b> 36628389-P 36627389-A
<b>Sandy Tan</b> 36635435-P 36645856-A	<b>Savannah Blue</b> 36635431-P 36635401-A	<b>Sedona Red</b> 36628360-P** 36627391-A**	<b>Silver Mist</b> 36636751-P 36645863-A	<b>Spanish Olive</b> 36628511-P 36629511-A	<b>Stone Mtn. Clay</b> 36635441-P 36635304-A	<b>Teak</b> 36628143-P** 36627143-A**	<b>Twilight Shadow</b> 36628144-P** 36627144-A**
<b>Willow</b> 36628366-P** 36629374-A**	<b>Adirondack Oak</b> 36628330-P 36627267-A	<b>App. Chestnut</b> 36627275-A	<b>Berk. Sycamore</b> 36629370-A** 36629374-A**	<b>Cabin Cedar (Canyon)</b> 36629368-A	<b>Catskill Maple</b> 36627249-A	<b>Cottage Gray (Graphite Gray)</b> 36644840-A	<b>Cumb. Ironwood</b> 36629370-A**
<b>Mesabi Cherry</b> 36635222-A	<b>Sierra Mesquite</b> 36629214-A						

# VYTEC®

<b>Antique Ivory</b> 36628336-P 36627266-A	<b>Arctic White</b> 36628321-P 36627243-A	<b>Autumn Ash</b> 36648151-P 36648131-A	<b>Clipper Gray</b> 36628331-P 36629286-A	<b>Country Almond</b> 36630098-P 36640932-A	<b>Desert</b> 36629230-P 36628202-A	<b>Estate Gray</b> 36640903-P 36640933-A	<b>Horizon Blue</b> 36640904-P 36640934-A
<b>Irish Linen</b> 36641509-P 36641539-A	<b>Sage</b> 36628330-P 36627267-A	<b>Sierra</b> 36640905-P 36629221-A	<b>Storm</b> 36629229-P 36628201-A	<b>Terra Clay</b> 36635441-P 36635304-A			

**A = Acrylic Smooth Finish**  
**P = PVC Striated Finish**  
**D = DuraPro® Satin Finish**

**\* = Accent Color Upcharge**  
**\*\* = Premium Color Upcharge**  
**Underscore Name = Solid Color Match to Variegated Item**