

# The PermaPost<sup>®</sup> Collection

- Weather Proof
- Insect Proof
- Load Bearing  
up to 5,000 lbs.

- Low Maintenance
- Finished White,  
Ready to Install
- 25 Year Warranty

Chamfered PermaPost<sup>®</sup> with Savannah  
PermaPorch<sup>®</sup> Railing and Square Balusters.

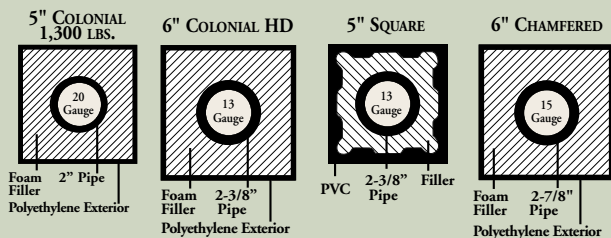
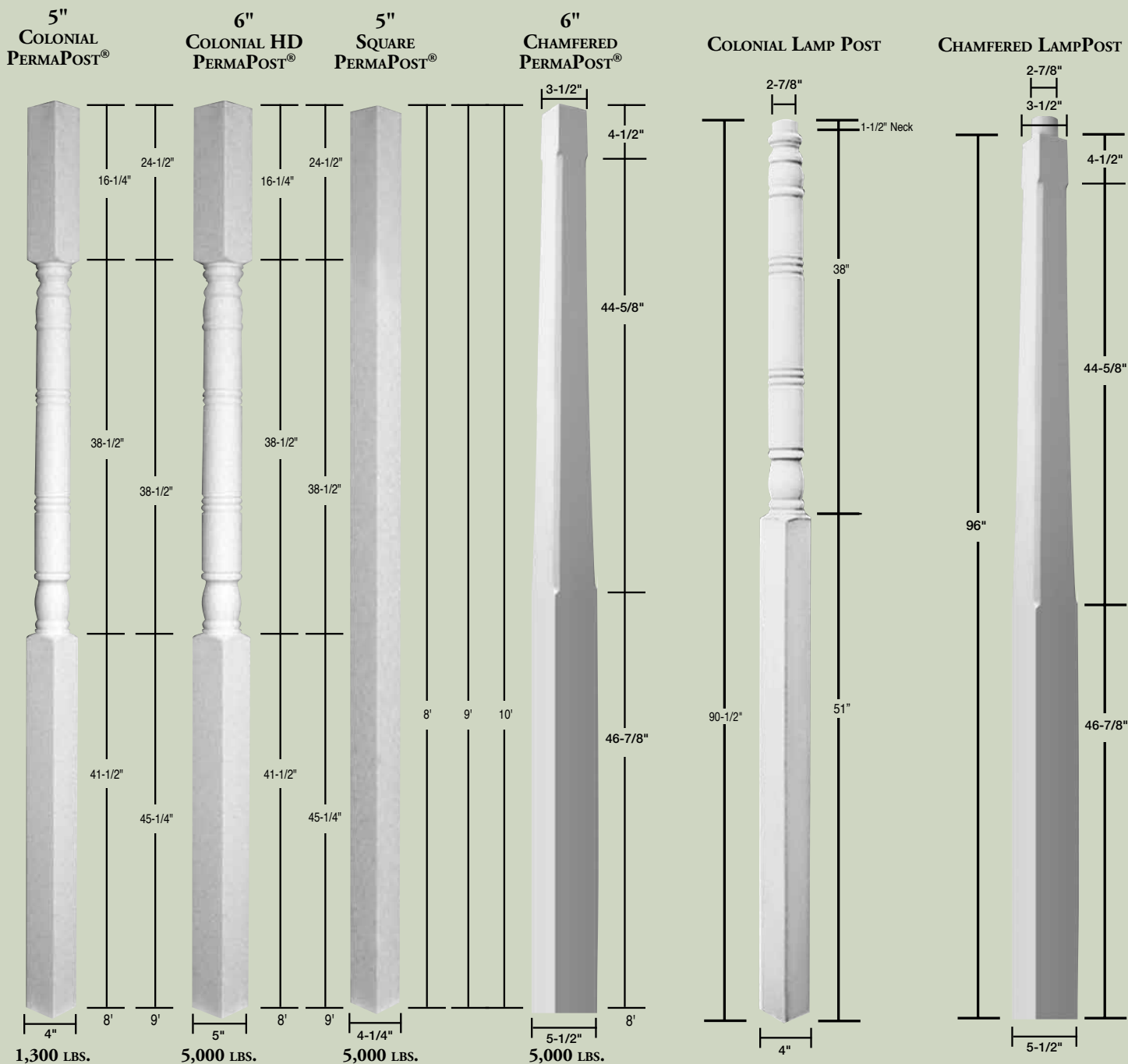


The PermaPost® is made from a super low maintenance polyethylene and is finished white. For a warm and inviting decorative look for your

front porch, choose from either the 5" or 6" Colonial post, the 5" square post, or the 6" Chamfered post.

## PermaPosts®

## Perma Lamp Posts



The Perma Lamp Post is an attractive way to light a drive or garden area. The pipe in the center is designed to allow a wire to be easily installed. The 2<sup>7</sup>/<sub>8</sub>" pipe fits most outdoor lamp fixtures.

## Description

Dimensions are nominal and may vary slightly.

- 5" Colonial PermaPosts® and lamp posts are net 4"
- 6" Colonial PermaPosts® are net 5"

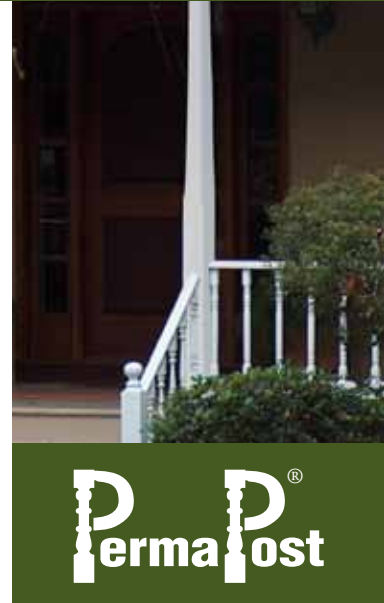
Chamfered PermaPosts® and lamp posts are net 3 1/2" and 5 1/2"

- Square posts are net 4 1/4"
- Lamp posts can accommodate most outdoor lamp fixtures.

The PermaPost® is composed of a polyethylene shell which surrounds a galvanized steel pipe (5" post – 20 gauge, 6" post – 13 gauge, chamfered post – 15 gauge) and polyurethane foam filler. The 6" PermaPost® is tested to carry a load of up to 5,000 lbs. and the 5" post is rated at 1,300 lbs. (ASTM A500 (40 K.S.I.))

## Warranty

HB&G Building Products, Inc. warrants that for twenty-five years the PermaPost® porch or lamp post is free from defects in material and workmanship. Upon proper installation of the post, HB&G Building Products, Inc. will replace any PermaPost® which has failed as a result of defective material or workmanship. In the event of a claim against this warranty, proof of purchase, with date will be required to affect such a claim. Installation cost not included. HB&G Building Products, Inc. gives no other warranty expressed or implied. For complete warranty visit [www.hbgcolumns.com](http://www.hbgcolumns.com).

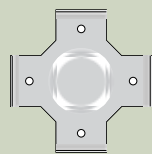


**PermaPost®**

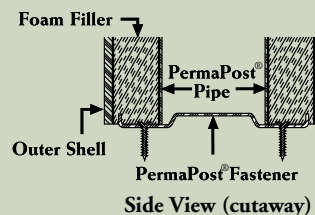
## FASTENING SYSTEMS

### COLONIAL PERMAPOST®

Two (2) PermaPost® Fasteners are shipped with each colonial post.



Top View of Fastener

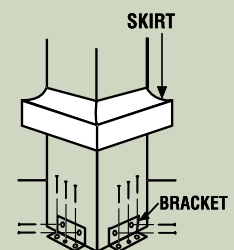


PermaPost® Fastener  
Side View (cutaway)

Optional

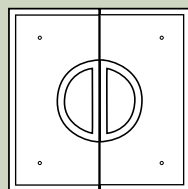
### PERMAPOST® FASTENING KITS

Each kit comes complete with skirt, brackets, and TapCon screws for wood or concrete substrates. Available for all PermaPost® styles.

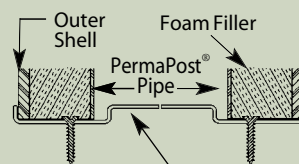


### SQUARE PERMAPOST®

Two (2) PermaPost® Fasteners are shipped inside each post.



Top View of Fastener



PermaPost® Fastener  
Side View (cutaway)